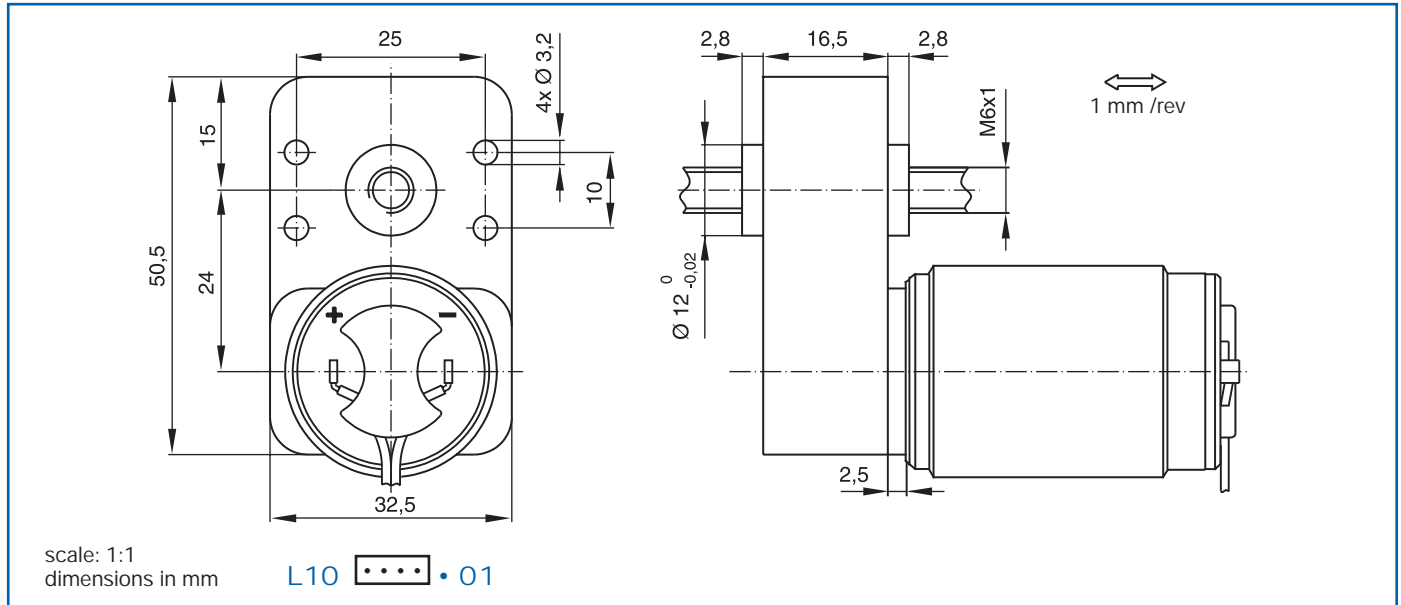


# escap L10

Linear actuator

Linear actuator



Ratio	<span style="border: 1px solid black; padding: 2px;">...</span> 5	100
Characteristics	L10	
1 Max. recom. holding force	N (lb)	200 (45)
2 Max. recom. linear force	N (lb)	50 at 10 mm/s (9 at 2 ft/min)
	N (lb)	100 at 2 mm/s (22 at 0.4 ft/min)
3 Average axial play	mm	0.4
4 Recom. linear speed range	mm/s	0.5 to 20
5 Temperature range	°C (°F)	-15...+55 (+5...+131)
6 Available with motor	22V28•201	
	22V48•204	
	28L28•49	
	P310•09	

The leadscrew should be prevented from rotating by the user.  
Modifications to obtain higher linear speeds are available on request.  
Accessories are also available on request, these include: fixing bolts, forked connector and threaded rod.  
Brass output stage.

## BL5010

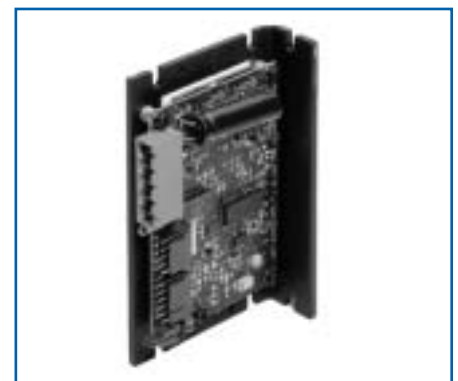
Driver for brushless motor with Hall sensors

- 2 quadrant amplifier operating in open loop or closed velocity loop
- Single DC supply voltage, 12 V to 50 V
- Maximum continuous current 10 A
- Hall sensor spacing select. 60°/120°
- Compact size

### Specifications

1 Power supply voltage	12 V to 50 V <sub>DC</sub>
2 Continuous current	10 A max. with heatsink
3 Auxiliary output voltage	6.25 V-30 mA / 15 V-50 mA
4 Chopper frequency	15 kHz
5 Inputs (pull-up +6.25 V)	Stop, Enable, Direction
6 Speed reference	0 V to 6.25 V
7 Selection mode	open loop or velocity loop by jumper
8 Protection	overcurrent / -temperature
9 Max. heatsink temperature	80°C

## BLDC drive circuit



Connector	Motor lead	PIN	Name
J1	Red	1	Hall S <sub>1</sub> PWR lead
	Black	2	Hall S <sub>1</sub> GND lead
	Yellow	3	Hall S <sub>1</sub>
	Orange	4	Hall S <sub>2</sub>
	White	5	Hall S <sub>3</sub>
J2	Red	1	Power +
	Black	2	Ground -
	Blue	3	Phase A
	Brown	4	Phase B
	Violet	5	Phase C
J3	POT-GND	1	Signal GND
	Stop=low	2	Enable
	CV=Low	3	Direction
P	POT wiper	4	Analog IN
	OT +6 V	5	+6.25 V
	No connect.	6	+15 V
60°/120°	-	-	Open
CV	Default	-	Closed
	Default	-	Open
			Closed